

STR

Filtri in aspirazione immersi



**Portata sino a
900 l/min**

**Serie
STR**

STR (Materiali)

- 1 - Attacco: Nylon
- 2 - Tubi di sostegno: Acciaio zincato
- 3 - Fondello: Nylon
- 4 - Valvola: Nylon - Acciaio

Valvola di by-pass

- Pressione di apertura:
30 kPa ± 10%

Temperatura

- da -25°C a +110°C

Flusso dell'olio dall'esterno all'interno.

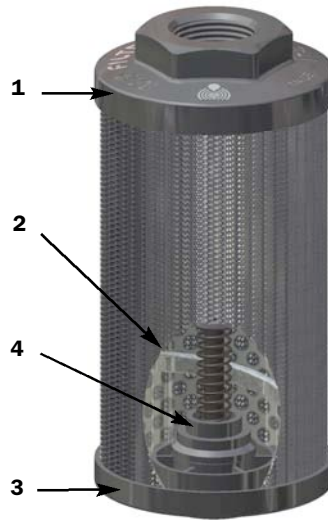
Compatibilità

- Secondo ISO 2943; valido per oli minerali (tipi HHHM-HHR-HVHG secondo ISO 6743/4) e fluidi sintetici (tipi HS-HFDR-HFDS-HFDU secondo ISO 6743/4).
- Per emulsioni acquose (tipi HFAE-HFAS secondo ISO 6743/4) ed altri fluidi diversi da quelli indicati, interpellare il reparto Tecnico - Commerciale.

Perdite di carico Δp Corpo

Le curve sono ricavate utilizzando olio minerale avente viscosità di 30 mm²/s (cSt) secondo ISO 3968.

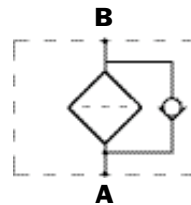
STR con by-pass



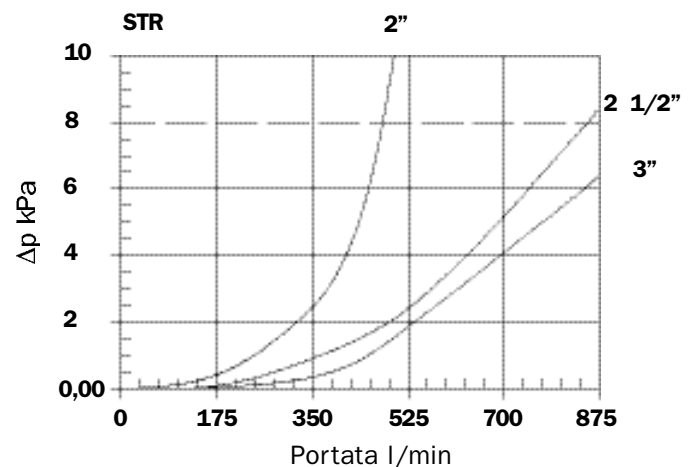
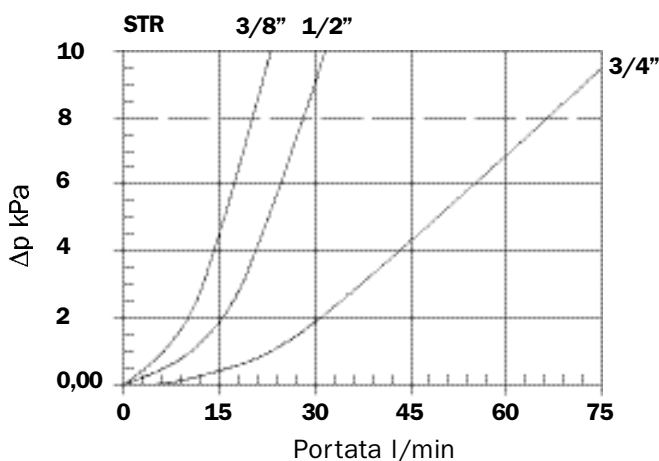
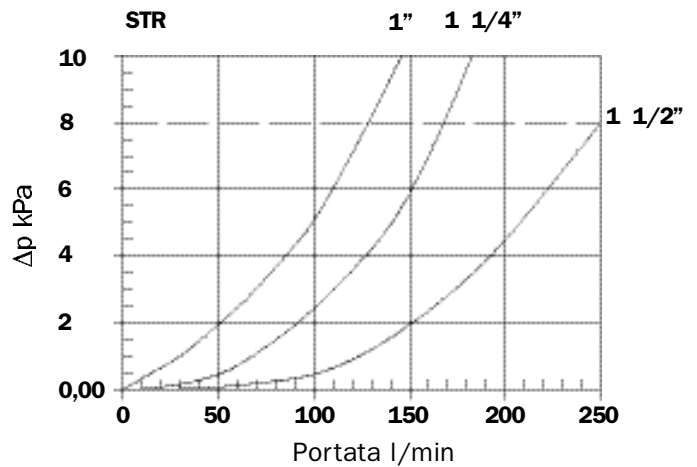
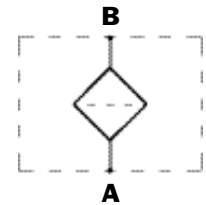
STR senza by-pass



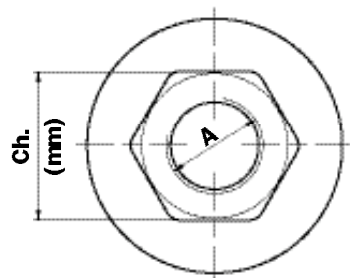
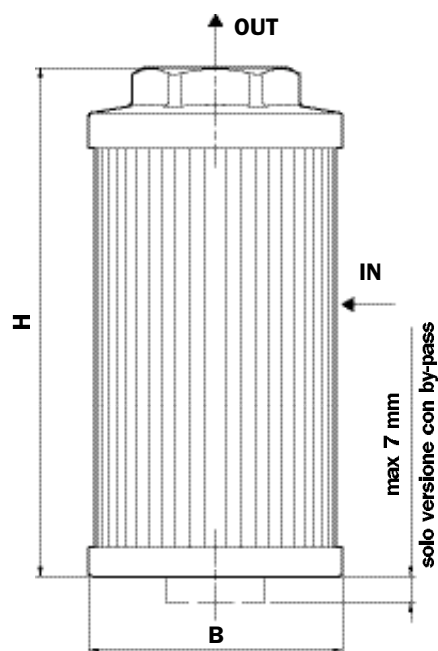
Esecuzione B



Esecuzione S

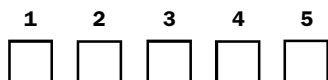


Dimensioni



Grandezza	A	B (mm)	H (mm)	Ch (mm)	Peso (kg.)
045-1 G1	G 3/8"				0,15
045-1 G2	3/8" NPT				0,15
045-2 G1	G 1/2"	46	105		0,19
045-2 G2	1/2" NPT			30	0,19
050-1 G1	G 3/8"				0,11
050-1 G2	3/8" NPT				0,11
050-2 G1	G 1/2"	52	79		0,11
050-2 G2	1/2" NPT				0,11
065-1 G1	G 1/2"				0,19
065-1 G2	1/2" NPT		110		0,19
065-2 G1	G 3/4"				0,22
065-2 G2	3/4" NPT	65			0,22
065-3 G1	G 3/4"				0,24
065-3 G2	3/4" NPT		144		0,24
065-4 G1	G 1"				0,22
065-4 G2	1" NPT			41	0,22
070-1 G1	G 1/2"				0,18
070-1 G2	1/2" NPT		95		0,18
070-2 G1	G 3/4"				0,17
070-2 G2	3/4" NPT	70			0,17
070-3 G1	G 3/4"				0,22
070-3 G2	3/4" NPT		141		0,22
070-4 G1	G 1"				0,24
070-4 G2	1" NPT				0,24
086-1 G1	G 1 1/2"				0,33
086-1 G2	1 1/2" NPT		143		0,33
086-2 G1	G 2"				0,30
086-2 G2	2" NPT				0,30
086-3 G1	G 1 1/2"				0,43
086-3 G2	1 1/2" NPT	86	201		0,43
086-4 G1	G 2"				0,40
086-4 G2	2" NPT				0,40
086-5 G1	G 1 1/2"				0,53
086-5 G2	1 1/2" NPT		261		0,53
086-6 G1	G 2"				0,50
086-6 G2	2" NPT				0,50
100-1 G1	G 1 1/4"		137		0,47
100-1 G2	1 1/4" NPT			69	0,47
100-2 G1	G1 1/4"				0,58
100-2 G2	1 1/4" NPT				0,58
100-3 G1	G 1 1/2"				0,55
100-3 G2	1 1/2" NPT	99	227		0,55
100-4 G1	G 2"				0,51
100-4 G2	2" NPT				0,51
100-5 G1	G 1 1/2"		137		0,43
100-5 G2	1 1/2" NPT				0,43
140-1 G1	G 1 1/2"				0,70
140-1 G2	1 1/2" NPT		160		0,70
140-2 G1	G 2"				0,68
140-2 G2	2" NPT				0,68
140-3 G1	G 2"				0,94
140-3 G2	2" NPT	130	262		0,94
140-4 G1	G 2 1/2"				1,10
140-4 G2	2 1/2" NPT		272		1,10
140-5 G1	G 3"			101	1,0
140-5 G2	3" NPT				1,0
140-6 G1	G 3"		330		1,17
140-6 G2	3" NPT				1,17

Filtro in aspirazione STR



Esempio: STR 070-4 S G1 M90 P01

Quantità per confezione

Nr. Pezzi	1 - Grandezza
12	045-1 3/8"
12	045-2 1/2"
12	050-1 3/8"
12	050-2 1/2"
6	065-1 1/2"
6	065-2 3/4"
6	065-3 3/4"
6	065-4 1"
6	070-1 1/2"
6	070-2 3/4"
6	070-3 3/4"
6	070-4 1"
6	086-1 1 1/2"
6	086-2 2"
6	086-3 1 1/2"
6	086-4 2"
6	086-5 1 1/2"
6	086-6 2"
6	100-1 1 1/4"
6	100-2 1 1/4"
6	100-3 1 1/2"
6	100-4 2"
6	100-5 1 1/2"
-	140-1 1 1/2"
-	140-2 2"
-	140-3 2"
-	140-4 2 1/2"
-	140-5 3"
-	140-6 3"

2 - Valvola



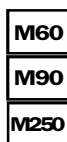
S Senza
B Con by-pass

3 - Attacchi



G1 Filettatura BSP
G2 Filettatura NPT

4 - Elementi filtranti



M60 Tela metallica
M90 Tela metallica
M250 Tela metallica

5 - Opzioni



P01 MP Filtri standard